

37 Hunts Field Close, Lymm

Offers Over £800,000

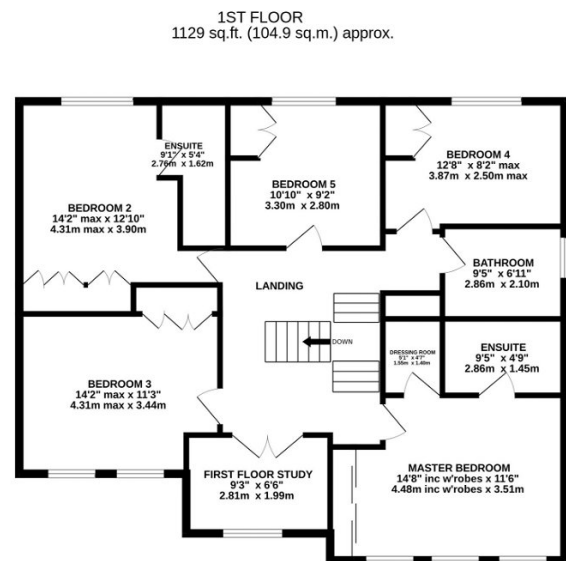
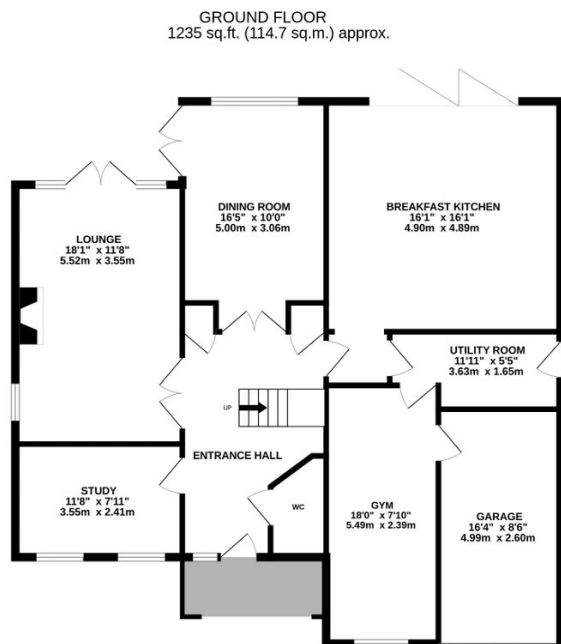
🛏 5 🚿 3 🚗 3



Immaculately presented detached executive home situated in a quiet cul-de-sac in a highly sought after location, within easy walking distance of Lymm village centre, local schools and picturesque Lymm Dam. Internal viewings highly recommended to appreciate what this prestigious home offers. EPC C.

Key Features

- Beautifully presented detached property
- Popular location within walking distance of Cherry Tree Primary School
- Attached Garage and off-road parking
- Stunning breakfast kitchen
- Lounge and separate dining room
- Utility Room
- Master bedroom with dressing room and en suite shower room
- Guest bedroom with en suite shower room
- Enclosed private rear garden
- Early viewings strongly recommended to appreciate all that this family home has to offer



TOTAL FLOOR AREA : 2364 sq.ft. (219.6 sq.m.) approx.

Whilst every attempt has been made to ensure the accuracy of the floorplan contained here, measurements of doors, windows, rooms and any other items are approximate and no responsibility is taken for any error, omission or mis-statement. This plan is for illustrative purposes only and should be used as such by any prospective purchaser. The services, systems and appliances shown have not been tested and no guarantee as to their operability or efficiency can be given.

Made with Metropix ©2023